



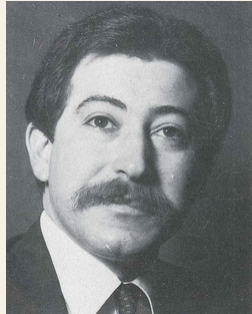
CELEBRATING 50 YEARS OF CLIENTS, PROJECTS AND STAFF

In 1970, Robert "Lee" Pare founded an engineering firm with the goal of serving clients and communities with expertise and integrity. Those principles have guided every project that Pare Corporation has undertaken throughout our first 50 years. We invite you to celebrate our firm's golden anniversary with us. This is the first of five emails, one per decade, to remember the milestones, projects, and people. Join us in remembering the founding of our firm and our first decade of service. . . the 1970s.

A few words from President and CEO, Larry Riggs

I have watched the firm grow in many ways since coming to Lee Pare & Associates in 1974. But as you can see, I haven't aged a day!

From the three co-workers who welcomed me on the first day of my summer job in 1974, to our current 115 employees, we continue to expand our ever-growing services and client base. And today, I am particularly pleased to see an overarching focus on sustainable and resilient design throughout our project work, as well as our continuing efforts to embrace the positive changes that technology



has brought to our profession over the past 50 years. But just in case, I still have my wooden slide rule - and I know how to use it!

As much as we have changed, we still hold fast to the ideals upon which our firm was founded: To provide knowledgeable professional services, with integrity, to our clients and to the public as a whole.

My thanks and congratulations to all who have been a part of our development. Below are a few of the memorable projects from our first decade—the 1970s.

Below are a few of our favorite projects from the 1970s



Design of deck repairs at the Quonset Point Carrier Pier. North Kingstown, RI



Rehabilitation of the lakes at Roger Williams Park. Providence, RI



Design of a 50,000-SF aircraft hangar conversion for the Rhode Island Air National Guard. North Kingstown, RI.



Design and construction services for sewer system rehabilitation and expansion. Narragansett, RI



Design of a 440-foot, four-span bridge over Amtrak and Yorker Mill Pond. Exeter, RI



Water system evaluation and design of improvements. North Kingstown, RI



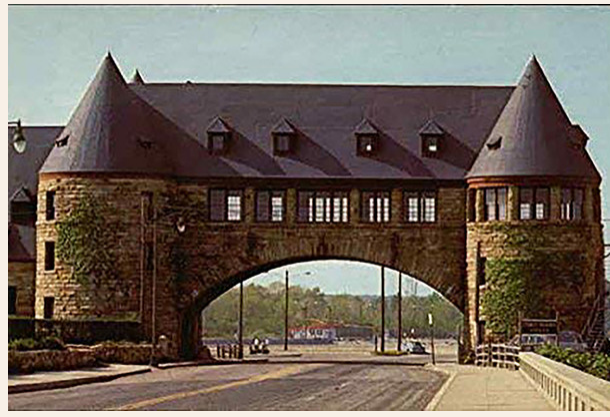
Wharf rehabilitation and new docking facilities for the Old Harbor Community Wharf. Block Island, RI



Design of vehicular and pedestrian facilities within Burnside Park and Kennedy Plaza. Providence, RI



Inspecting and repairing railroad bridges for P&W Railroad since 1976



Structural assessment and repairs to The Towers. Narragansett, RI

About Our Firm's Founder, Robert "Lee" Pare



Lee Pare was a great innovator, inventor and engineer. He held patents for several inventions, most notably a rubber-sealed road expansion joint, an elastomeric bridge expansion joint, and moveable traffic lane dividers. He was internationally known for his revolutionary work to improve roadway and bridge design, and his inventions continue to be incorporated into the designs of today.

Born and raised in upstate New York, Lee received his Bachelor of Science degree in engineering from Clarkson College (now University).

After being honorably discharged from the Army after five years of service during WWII, Lee earned his master's degree in engineering from Yale. Lee continued in reserve duty as a full colonel in the Army Corps of Engineers until his transfer to the Retired Reserves in 1972.

Lee began his private professional career with Spencer, White & Prentiss in New York, followed by a 20-year career at C.E. Maguire where he was one of the original associates and Vice-President, Chief of the Bridge Division. While there his notable projects included work on the Federal Highway System's Interstate 95 bridges throughout the northeast and the 130,000-SF USPS Central Post Office in Providence, RI - the first fully automated postal facility in the nation.

Lee started his individual practice in 1969 and formed Lee Pare & Associates in 1970, opening an office in the Turks Head Building in Providence. Some of his most notable design projects include the design and permitting of the South Quay in East Providence, RI, a 44-acre man-made parcel in the Providence River originally slated for a ship-to-rail port; extensive planning and design work with Capital Properties and architect William Warner for the rail line relocation, daylighting of the two rivers, and transformation of downtown Providence and Waterplace Park; and the design of a portside facility to accommodate two massive container cranes shipped from Hawaii and off-loaded at the Port of Providence.

Lee was active in several professional organizations, including the Providence Engineering Society, which honored him in 1979 with its highest tribute, the Freeman Award. He has been described as compassionate, thoughtful, brilliant, and professional. Yet there are two very specific and important words synonymous with the name Robert Lee Pare - Gentleman and Integrity. In their appropriate form, these two words continue to form the platform from which Pare Corporation operates today and into the future.



ENGINEERS **SCIENTISTS** **PLANNERS**

Lincoln, RI
401-334-4100

parecorp.com

Foxboro, MA
508-543-1755

Share this email:



[Manage](#) your preferences | [Opt out](#) using TrueRemove®

Got this as a forward? [Sign up](#) to receive our future emails.

View this email [online](#).

8 Blackstone Valley Place
Lincoln, RI | 02865 US

This email was sent to .

To continue receiving our emails, add us to your address book.

[Subscribe](#) to our email list.