



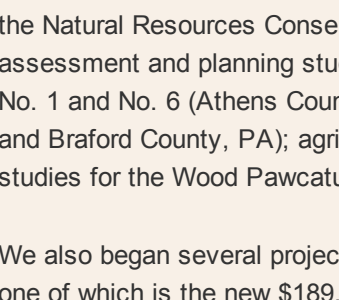
The June 2019 Annual Cookout and Cornhole Tournament organized by Pare's Rising Professionals Committee.

## CELEBRATING 50 YEARS OF CLIENTS, PROJECTS, AND STAFF

This is our fifth (one per decade) issue of our 50th anniversary newsletters as we celebrate Pare Corporation's golden anniversary. However, we did not anticipate how the world would change in such a short period of time when we began our celebration. Because of that we chose to pause historical commemoration and extend it beyond the calendar dates. So please celebrate with us in this final (albeit belated!) anniversary edition. We invite you to join us in remembering some highlights from the 2010s.

### A few words from President, Larry Riggs

Although we are celebrating our history decade by decade, our project work isn't as linear. At the start of 2010, we continued to build on the momentum of the previous decade expanding work in several markets, including the Massachusetts Model Schools Program, which would eventually total seven new high schools.



Our work on the Narragansett Bay Commission's Combined Sewer Overflow System abatement project began in 1994 to improve water quality in Narragansett Bay. In this decade we completed Phase II sewer separations and began the program management for Phase III. Our support of this important undertaking has included several smaller green stormwater infrastructure projects including the Macomber Stadium and the Louis C. Yip Soccer Field in Central Falls.

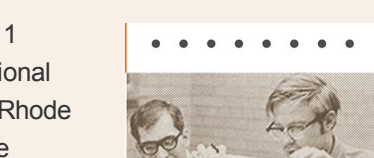
By mid-decade we started to look at how Geographic Information Systems (GIS) could improve our project work, provide modeling and analysis, and reduce field time. We have since expanded on this technology to include several aerial drone data-capturing capabilities.



In 2015 we expanded our Massachusetts operations and moved into a larger office space. The photo to the right was taken at the open house that we held at the Foxboro office after the move. Since then, we have grown this to a full-service office to encompass all four of our divisions.

In 2018, we were awarded a National A/E IDIQ Design Services Contract for the Northeast (Region 1) by the Natural Resources Conservation Service (NRCS). Through this opportunity, Pare conducted assessment and planning studies for the Arm Brook Dam (Westfield, MA) and Margaret Creeks Structures No. 1 and No. 6 (Athens County, OH); flood mitigation studies for Bentley Creek (Chemung County, NY and Bradford County, PA); agricultural waste facilities in Vermont and West Virginia; and watershed planning studies for the Wood Pawcatuck River Watershed in Rhode Island.

We also began several projects that would extend beyond this decade, one of which is the new \$189.5-million, four-story, 304,000-SF East Providence High School. Starting in 2018, Pare provided structural, site/civil, environmental, traffic engineering and permitting for the facility.



The project required the preparation of early sitework and structural packages to facilitate the accelerated construction schedule, with the first package prepared within four months of beginning the project!

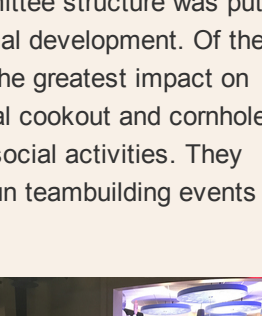
We continued to incorporate resilient and sustainable design into all of our projects, and Pare became a Charter Member of the Institute for Sustainable Infrastructure (ISI). This designation would contribute to our being selected in 2019 to design a water infiltration mitigation system for five buildings at the State of Rhode Island historic John O. Pastore Complex. This project was the first in the state to qualify for the SITES sustainability-focused rating system.



A few of our notable community impact efforts included a recycling drive in 2013 and helping with the Blackstone Valley Prep School's "KABOOM!" Playground in 2014. Our commitment to Boys Town New England also continued for which we were honored in 2014 with the Boys Town New England Youth Spirit Award. We were honored again in 2019 when Rhode Island Monthly Magazine and the Rhode Island Foundation awarded Pare with a 2019 Common Good Award which "recognizes Rhode Island businesses of all sizes that inspire philanthropy in their employees around the state, not by writing a check to a worthy cause, but by encouraging staff to go into the community and help."

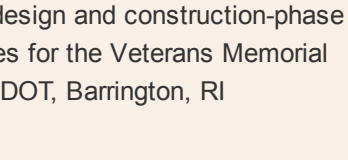
That decade we received a few other notable recognitions, including a 2011 Marketing Communications award from the Society for Marketing Professional Services (SMPS) for our 40th anniversary media campaign and the WTS-Rhode Island 2019 Employer of the Year Award. And several of our projects were recognized by ACEC/MA and ACEC-RI for engineering excellence, including:

- Providence Police Department Firing Range Lead Remediation and Facility Upgrades (Scituate, RI),
- Veteran's Memorial Bridge No. 182 Reconstruction (Barrington, RI),
- Wastewater Treatment Facility Levee Design (Warwick, RI),
- Stiles Reservoir Dam Reconstruction (Leicester, MA),
- URI's Beupre Center for Chemical and Forensic Sciences (Kingston, RI),
- UMass's University Hall (Boston, MA),
- Marshfield High School (Marshfield, MA),
- Bristol Town Beach Stormwater Outfall Retrofit (Bristol RI).



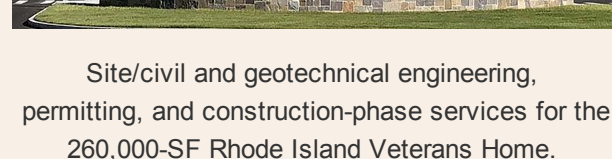
Over the span of the decade, a new corporate committee structure was put into place to share resources and provide professional development. Of the committees, Pare's Rising Professionals have had the greatest impact on our corporate culture. They have organized an annual cookout and cornhole tournament, lunch & learn presentations, and other social activities. They also revitalized our tradition of bowling to organize fun teambuilding events while raising money for a good cause.

As you can see from these pictures of our bowling team from 1989 to a photo taken in 2017, old things have become new again. Lee Pare would be proud of this next generation of engineers and the work they are doing in the community!

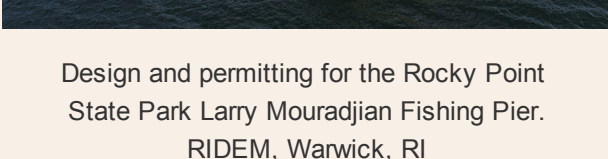


As our fifth decade came to a close, we looked forward to building on this legacy for another 50 years!

### Below are a few of our favorite projects from the 2010s



Structural assessment and design for the 33,000-SF Clinical Development Manufacturing Facility. Moderna, Norwood, MA



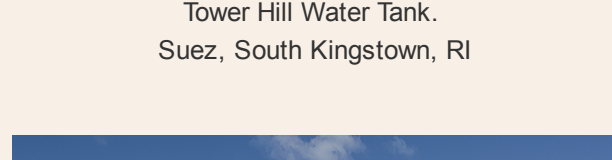
Accelerated bridge design and construction-phase engineering services for the Veterans Memorial Bridge. RIDOT, Barrington, RI



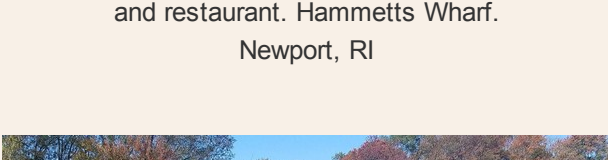
Site/civil and geotechnical engineering, permitting, and construction-phase services for the 260,000-SF Rhode Island Veterans Home. RIDOA, Bristol, RI



Design and permitting for the Rocky Point State Park Larry Mouradian Fishing Pier. RIDEM, Warwick, RI



Design, permitting, and construction administration for the 1MG composite Tower Hill Water Tank. Suez, South Kingstown, RI



Analysis, site design, and permitting services for the 47,000-SF, 84-bed hotel, meeting facility, and restaurant. Hammetts Wharf. Newport, RI



Site design, traffic engineering, geotechnical investigations, and environmental analysis for the Central & South West Middle Schools. City of Quincy, MA



Following catastrophic flooding in 2010, design and permitting to raise the waste water treatment plant levee height by 5.5 feet to accommodate a 500-year storm. City of Warwick Sewer Authority, Warwick, RI



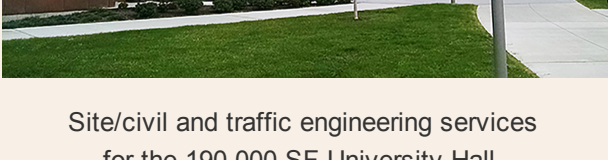
Traffic/roadway design improvements for five traffic signals and a new roundabout. Twin River Casino, Lincoln, RI



Site/civil and traffic engineering services for the 190,000-SF University Hall. UMass Boston, MA



Site design services for improvements and new synthetic turf field at Bucklin Park in the heart of an urban neighborhood. City of Providence, RI



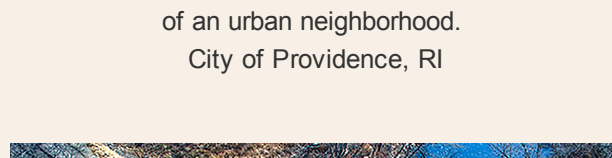
Engineering design services and construction administration for the rehabilitation of a bulk cement-loading pier. Lafarge, Baltimore, MD



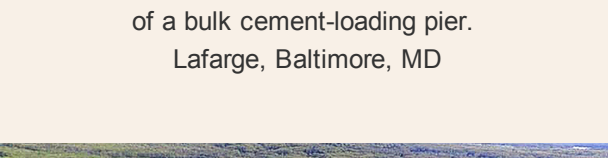
Design of a new 106-LF single-span steel through-girder superstructure using accelerated bridge construction. P&W Railroad, Sutton, MA



Engineering site services and permitting for three new ground-mounted solar farms. Southern Sky Renewable Energy RI, LLC, Various Locations, RI



Geotechnical engineering design of spillway and embankment improvements for the Haskell Pond Dam. City of Gloucester, MA



'Complete Streets' roadway, pedestrian, and green stormwater improvement design for Old Tower Hill Road. RIDOT, South Kingstown, RI



Bridge design repairs of four bridges and the widening of three bridges in support of the I-95 Northbound Viaduct Replacement. RIDOT, Providence, RI



Design of a multi-use path with a timber pedestrian bridge on an abandoned rail bed. Town of Warren, RI



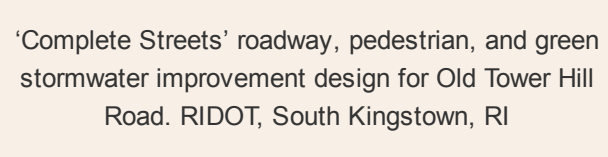
Design of a new 106-LF single-span steel through-girder superstructure using accelerated bridge construction. P&W Railroad, Sutton, MA



Engineering site services and permitting for three new ground-mounted solar farms. Southern Sky Renewable Energy RI, LLC, Various Locations, RI



Geotechnical engineering design of spillway and embankment improvements for the Haskell Pond Dam. City of Gloucester, MA



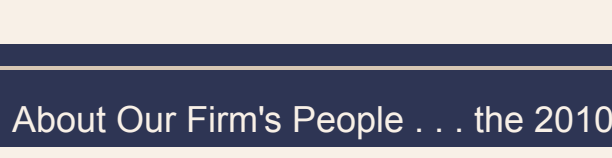
'Complete Streets' roadway, pedestrian, and green stormwater improvement design for Old Tower Hill Road. RIDOT, South Kingstown, RI



Bridge design repairs of four bridges and the widening of three bridges in support of the I-95 Northbound Viaduct Replacement. RIDOT, Providence, RI



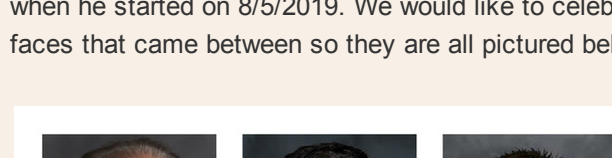
Design of a multi-use path with a timber pedestrian bridge on an abandoned rail bed. Town of Warren, RI



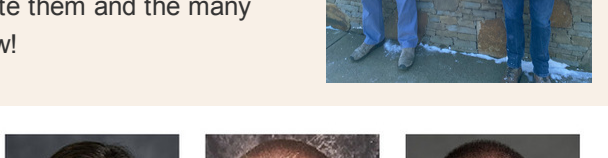
Design of a new 106-LF single-span steel through-girder superstructure using accelerated bridge construction. P&W Railroad, Sutton, MA



Engineering site services and permitting for three new ground-mounted solar farms. Southern Sky Renewable Energy RI, LLC, Various Locations, RI



Geotechnical engineering design of spillway and embankment improvements for the Haskell Pond Dam. City of Gloucester, MA



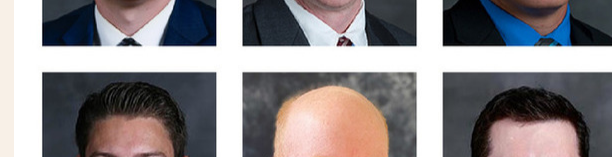
'Complete Streets' roadway, pedestrian, and green stormwater improvement design for Old Tower Hill Road. RIDOT, South Kingstown, RI



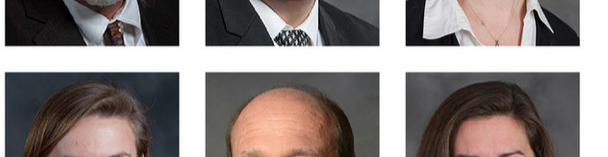
Bridge design repairs of four bridges and the widening of three bridges in support of the I-95 Northbound Viaduct Replacement. RIDOT, Providence, RI



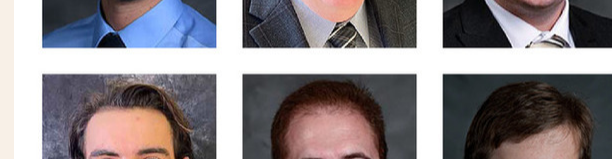
Design of a multi-use path with a timber pedestrian bridge on an abandoned rail bed. Town of Warren, RI



Design of a new 106-LF single-span steel through-girder superstructure using accelerated bridge construction. P&W Railroad, Sutton, MA



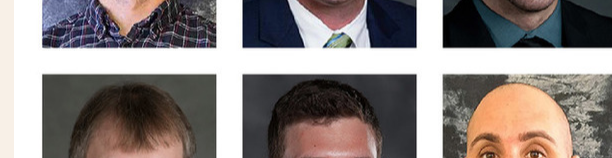
Engineering site services and permitting for three new ground-mounted solar farms. Southern Sky Renewable Energy RI, LLC, Various Locations, RI



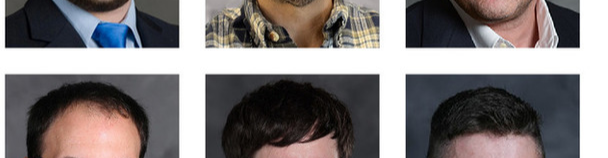
Geotechnical engineering design of spillway and embankment improvements for the Haskell Pond Dam. City of Gloucester, MA



'Complete Streets' roadway, pedestrian, and green stormwater improvement design for Old Tower Hill Road. RIDOT, South Kingstown, RI



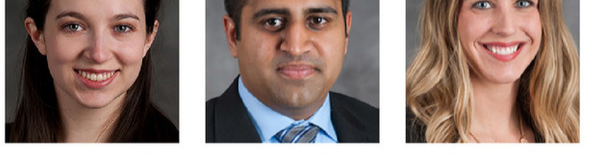
Bridge design repairs of four bridges and the widening of three bridges in support of the I-95 Northbound Viaduct Replacement. RIDOT, Providence, RI



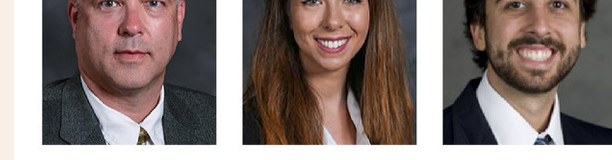
Design of a multi-use path with a timber pedestrian bridge on an abandoned rail bed. Town of Warren, RI



Design of a new 106-LF single-span steel through-girder superstructure using accelerated bridge construction. P&W Railroad, Sutton, MA



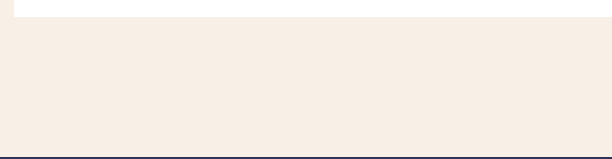
Engineering site services and permitting for three new ground-mounted solar farms. Southern Sky Renewable Energy RI, LLC, Various Locations, RI



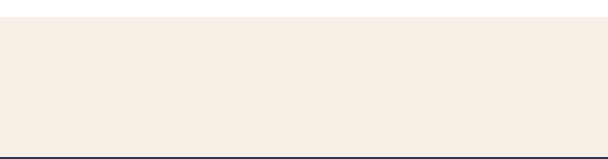
Geotechnical engineering design of spillway and embankment improvements for the Haskell Pond Dam. City of Gloucester, MA



'Complete Streets' roadway, pedestrian, and green stormwater improvement design for Old Tower Hill Road. RIDOT, South Kingstown, RI



Bridge design repairs of four bridges and the widening of three bridges in support of the I-95 Northbound Viaduct Replacement. RIDOT, Providence, RI



Design of a multi-use path with a timber pedestrian bridge on an abandoned rail bed. Town of Warren, RI



Design of a new 106-LF single-span steel through-girder superstructure using accelerated bridge construction. P&W Railroad, Sutton, MA



Engineering site services and permitting for three new ground-mounted solar farms. Southern Sky Renewable Energy RI, LLC, Various Locations, RI



Geotechnical engineering design of spillway and embankment improvements for the Haskell Pond Dam. City of Gloucester, MA



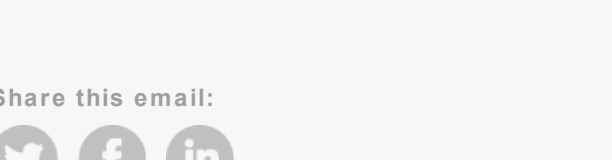
'Complete Streets' roadway, pedestrian, and green stormwater improvement design for Old Tower Hill Road. RIDOT, South Kingstown, RI



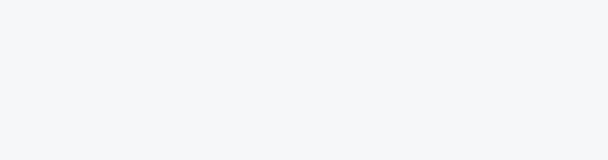
Bridge design repairs of four bridges and the widening of three bridges in support of the I-95 Northbound Viaduct Replacement. RIDOT, Providence, RI



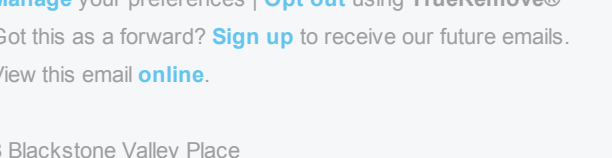
Design of a multi-use path with a timber pedestrian bridge on an abandoned rail bed. Town of Warren, RI



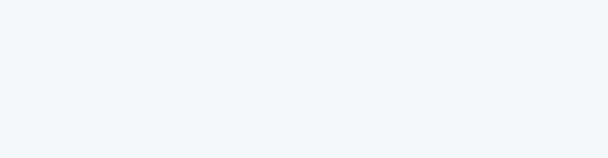
Design of a new 106-LF single-span steel through-girder superstructure using accelerated bridge construction. P&W Railroad, Sutton, MA



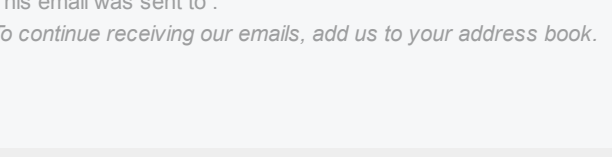
Engineering site services and permitting for three new ground-mounted solar farms. Southern Sky Renewable Energy RI, LLC, Various Locations, RI



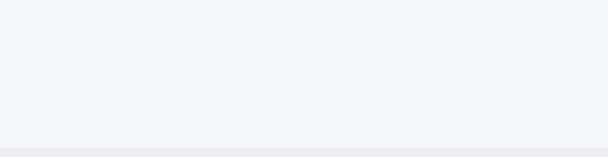
Geotechnical engineering design of spillway and embankment improvements for the Haskell Pond Dam. City of Gloucester, MA



'Complete Streets' roadway, pedestrian, and green stormwater improvement design for Old Tower Hill Road. RIDOT, South Kingstown, RI



Bridge design repairs of four bridges and the widening of three bridges in support of the I-95 Northbound Viaduct Replacement. RIDOT, Providence, RI



Design of a multi-use path with a timber pedestrian bridge on an abandoned rail bed. Town of Warren, RI



Design of a new 106-LF single-span steel through-girder superstructure using accelerated bridge construction. P&W Railroad, Sutton, MA



Engineering site services and permitting for three new ground-mounted solar farms. Southern Sky Renewable Energy RI, LLC, Various Locations, RI



Geotechnical engineering design of spillway and embankment improvements for the Haskell Pond Dam. City of Gloucester, MA



'Complete Streets' roadway, pedestrian, and green stormwater improvement design for Old Tower Hill Road. RIDOT, South Kingstown, RI



Bridge design repairs of four bridges and the widening of three bridges in support of the I-95 Northbound Viaduct Replacement. RIDOT, Providence, RI



Design of a multi-use path with a timber pedestrian bridge on an abandoned rail bed. Town of Warren, RI



Design of a new 106-LF single-span steel through-girder superstructure using accelerated bridge construction. P&W Railroad, Sutton, MA



Engineering site services and permitting for three new ground-mounted solar farms. Southern Sky Renewable Energy RI, LLC, Various Locations, RI



Geotechnical engineering design of spillway and embankment improvements for the Haskell Pond Dam. City of Gloucester, MA



'Complete Streets' roadway, pedestrian, and green stormwater improvement design for Old Tower Hill Road. RIDOT, South Kingstown, RI



Bridge design repairs of four bridges and the widening of three bridges in support of the I-95 Northbound Viaduct Replacement. RIDOT, Providence, RI



Design of a multi-use path with a timber pedestrian bridge on an abandoned rail bed. Town of Warren, RI



Design of a new 106-LF single-span steel through-girder superstructure using accelerated bridge construction. P&W Railroad, Sutton, MA



Engineering site services and permitting for three new ground-mounted solar farms. Southern Sky Renewable Energy RI, LLC, Various Locations, RI



Geotechnical engineering design of spillway and embankment improvements for the Haskell Pond Dam. City of Gloucester, MA



'Complete Streets' roadway, pedestrian, and green stormwater improvement design for Old Tower Hill Road. RIDOT, South Kingstown, RI



Bridge design repairs of four bridges and the widening of three bridges in support of the I-95 Northbound Viaduct Replacement. RIDOT, Providence, RI



Design of a multi-use path with a timber pedestrian bridge on an abandoned rail bed. Town of Warren, RI



Design of a new 106-LF single-span steel through-girder superstructure using accelerated bridge construction. P&W Railroad, Sutton, MA



Engineering site services and permitting for three new ground-mounted solar farms. Southern Sky Renewable Energy RI, LLC, Various Locations, RI



Geotechnical engineering design of spillway and embankment improvements for the Haskell Pond Dam. City of Gloucester, MA



'Complete Streets' roadway, pedestrian, and green stormwater improvement design for Old Tower Hill Road. RIDOT, South Kingstown, RI



Bridge design repairs of four bridges and the widening of three bridges in support of the I-95 Northbound Viaduct Replacement. RIDOT, Providence, RI



Design of a multi-use path with a timber pedestrian bridge on an abandoned rail bed. Town of Warren, RI



Design of a new 106-LF single-span steel through-girder superstructure using accelerated bridge construction. P&W Railroad, Sutton, MA



Engineering site services and permitting for three new ground-mounted solar farms. Southern Sky Renewable Energy RI, LLC, Various Locations, RI



Geotechnical engineering design of spillway and embankment improvements for the Haskell Pond Dam. City of Gloucester, MA



'Complete Streets' roadway, pedestrian, and green stormwater improvement design for Old Tower Hill Road. RIDOT, South Kingstown, RI



Bridge design repairs of four bridges and the widening of three bridges in support of the I-95 Northbound Viaduct Replacement. RIDOT, Providence, RI



Design of a multi-use path with a timber pedestrian bridge on an abandoned rail bed. Town of Warren, RI



Design of a new 106-LF single-span steel through-girder superstructure using accelerated bridge construction. P&W Railroad, Sutton, MA



Engineering site services and permitting for three new ground-mounted solar farms. Southern Sky Renewable Energy RI, LLC, Various Locations, RI



Geotechnical engineering design of spillway and embankment improvements for the Haskell Pond Dam. City of Gloucester, MA



'Complete Streets' roadway, pedestrian, and green stormwater improvement design for Old Tower Hill Road. RIDOT, South Kingstown, RI



Bridge design repairs of four bridges